

# SWISSMEX®

## **SW189C - 15 Litre Solvent Knapsack Sprayers**



*Our industrial line of sprayers has been designed to apply efficiently materials commonly used in the construction industry.*

*Superior quality, solidly built, heavy duty compression sprayers from Swissmex Rapid in Mexico, are manufactured with high density polyethylene and other chemical resistant materials.*

*With a wide filling neck, ergonomic shut off gun filter and lock-on facility, 52cm brass lance, choose from plastic flat fan or brass adjustable cone type nozzle, pressure relief valve, non- absorbent woven polyester shoulder straps and viton elastomers.*

*Designed and manufactured by experts to apply exclusively solvents and chemical products commonly used in the construction industry like: form release agents, oil and water based sealers, curing compounds and diesel.*

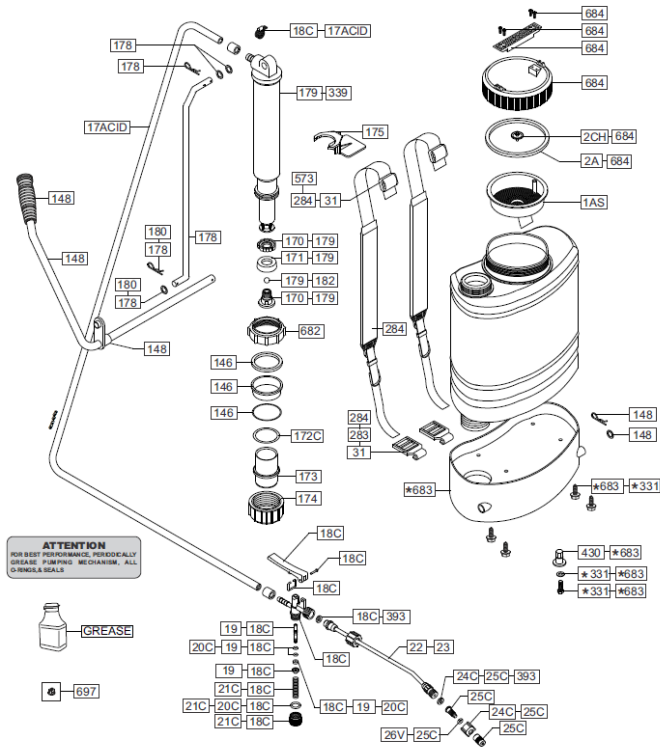


**SPRAYMASTER**  
**Spray Shop**

Phone: 08 9353 1177 Fax: 08 9353 1175

Email: [info@spraymaster.net.au](mailto:info@spraymaster.net.au)

# Parts list for the SOLVENTS 40 - 4.0-gallon Knapsack Sprayer



**SWISSMEX**  
**SOLVENTS 40**

## PARTS LIST

Kit 1AS	6" strainer for tank lid.
Kit 2A	Seal for 6" lid.
Kit 2CH	Check valve for lid.
Kit 17ACID	Hose for acid sprayer.
Kit 18C	Complete spray gun with seals.
Kit 19	Spindle set.
Kit 20C	Spindle O-ring set.
Kit 21C	Plug set.
Kit 22	20" brass spray wand.
Kit 24C	Nozzle holder.
Kit 25C	Adjustable brass nozzle with nozzle holder.
Kit 26V	Viton O-ring for spray tip.
Kit 31	Shoulder strap clip.
Kit 146	Nylon guide, fabric seal, & O-ring.
Kit 148	Metal pump handle with plastic grip.
Kit 170	Piston seating ring & holding screw.
Kit 171	Viton piston cup.
Kit 172C	O-ring for cylinder for construction units.
Kit 173	Cylinder.
Kit 174	Holding cap for cylinder.
Kit 175	Agitator.
Kit 178	Metal pump lever with locking pins.
Kit 179	Complete pump module assembly.
Kit 180	Small locking R-pin for pump handle.
Kit 182	Plastic ball.
Kit 283	Shoulder strap clips.
Kit 284	Heavy padded adjustable shoulder straps (2) with hooks.
* Kit 331	Screw set for base.
Kit 339	Pump tube .
Kit 393	Washer set for construction spray gun (Kit 18C).
Kit 430	Plastic nut & base.
Kit 573	Special buckle attachment.
Kit 682	Threaded holder for pump unit.
* Kit 683	Gray tank base.
Kit 684	Gray tank lid.
+ Kit 697	Spray nozzle SF11010
+ Kit GREASE	Silicone grease lubricant for all sprayers.

NOTE: + Not supplied with unit, see sheet of accessories.  
NOTE: \* Kit 331 & Kit 683 include screws of former and actual version.

## The SOLVENTS 40 - 4 gallon knapsack Sprayer

We would like to congratulate you on the purchase of your new SOLVENTS 40. The sprayer that allows you the easiest most comfortable way of carry out spraying projects. You are the owner of one of the most reliable units made today.

- We strongly recommend you to carefully read and follow all the information on this sheet, the Warnings Sheet and the Trouble Shooting Guide (if needed). Also follow all instructions and MSDS (Material Safety Data Sheet) provided by the manufacturer of the chemical product used.

### ASSEMBLY INSTRUCTION

1. Attach spray wand to spray gun and tighten firmly.
2. If unit is fitted with pressure valve, secure tightly.

### HOW TO PREPARE YOUR SOLVENTS 40 FOR USE

1. Before you remove pump, be sure there is no pressure in the tank. In order to release pressure, invert unit upside down and squeeze spray pistol (aim away from you). Pressure will escape; when hissing stops, all pressure has been released. Remove pump assembly by turning counter-clockwise. The pump handle has two locking positions, one turning clockwise and one counter-clockwise.
2. Mix solution in a separate receptacle, following manufacturer's directions on the container.
3. Pour pre-mixed solution into sprayer; then put pump assembly back into sprayer and tighten down firmly. You are now ready to pressurize the sprayer.
4. Spray pistol may be locked in the open position for continual spraying.

### HOW TO ADJUST THE SOLVENTS 40 NOZZLE

1. To adjust nozzle, tighten cap (turn clockwise) for fine atomized spray, or loosen (turn counter-clockwise) for coarser spray or solid stream.

### EMPTYING TANK

1. Be sure there is no pressure in the tank (see How to Prepare your Sovens 40 for Use, #1).

### HOW TO CLEAN AND MAINTAIN YOUR SOLVENTS 40.

1. Release pressure as previously indicated.
2. Pour out remaining solution; then rinse all parts thoroughly with clean water.
3. Leaving approximately ½ gallon of fresh water in tank, pressurize and flush the hose and wand by depressing trigger to clean out system; then drain all remaining water.
4. Always store tank clean and empty, and in a dry and shaded location.

### SWISSMEX-RAPID, S.A. DE C.V.

Calle Swissmex No. 500 Fax (474) 742-0856, 742-4185  
Col. Las Ceibas, 47440 ☎ (474) 741-2200, 741-2201  
Lagos de Moreno Jalisco, México www.swissmex.com  
741-2202 exports@swissmex.com.mx

BN189.335-0513E/EX  
Rev.01



**SPRAYMASTER**  
**Spray Shop**

Phone: 08 9353 1177 Fax: 08 9353 1175

Email: info@spraymaster.net.au